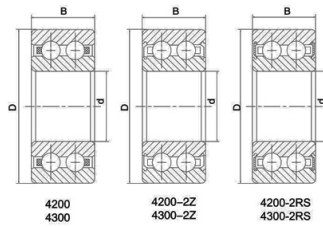
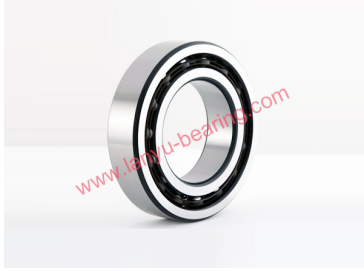


## Nylon cage double row deep groove ball bearing



Bearing No.			Dimensions(mm)				Rated load(KN)		Weight
			d	D	B	r	Cr	Cor	Mass(KG)
4200	4200-2Z	4200-2RS	10	30	14	0.5	9.3	5.2	0.047
4201	4201-2Z	4201-2RS	12	32	14	0.5	10.6	6.2	0.053
4202	4202-2Z	4202-2RS	15	35	14	0.6	11	7.5	0.059
4203	4203-2Z	4203-2RS	17	40	16	0.6	11.7	10.4	0.09
4204	4204-2Z	4204-2RS	20	47	18	1	16.4	12.5	0.14
4205	4205-2Z	4205-2RS	25	52	18	1	19	14.6	0.16
4206	4206-2Z	4206-2RS	30	62	20	1	26	20.8	0.26
4207	4207-2Z	4207-2RS	35	72	23	1.1	35.1	28.5	0.4
4208	4208-2Z	4208-2RS	40	80	23	1.1	37.1	32.5	0.5
4209	4209-2Z	4209-2RS	45	85	23	1.1	39	36	0.54
4210	4210-2Z	4210-2RS	50	90	23	1.1	41	40	0.58
4211	4211-2Z	4211-2RS	55	100	25	1.5	44.9	44	0.8
4212	4212-2Z	4212-2RS	60	110	28	1.5	57.2	55	1.1
4213	4213-2Z	4213-2RS	65	120	31	1.5	67.6	67	1.45
4214	4214-2Z	4214-2RS	70	125	31	1.5	70.2	73.5	1.5
4215	4215-2Z	4215-2RS	75	130	31	1.5	72.8	80	1.6
4216	4216-2Z	4216-2RS	80	140	33	2	80.6	90	2
4217	4217-2Z	4217-2RS	85	150	36	2	93.6	102	2.5
4218	4218-2Z	4218-2RS	90	160	40	2	112	122	3.59
4300	4300-2Z	4300-2RS	10	35	17	0.6	12.8	7.7	0.091
4301	4301-2Z	4301-2RS	12	37	17	1	13	7.8	0.092
4302	4302-2Z	4302-2RS	15	42	17	1	13.1	11.7	0.12
4303	4303-2Z	4303-2RS	17	47	19	1	16.5	15	0.16

Nylon cage double row deep groove ball bearing

4304	4304-2Z	4304-2RS	20	52	21	1.1	19.5	17	0.21
4305	4305-2Z	4305-2RS	25	62	24	1.1	26.3	25.7	0.34
4306	4306-2Z	4306-2RS	30	72	27	1.1	35.5	35.9	0.5
4307	4307-2Z	4307-2RS	35	80	31	1.5	40.6	41.8	0.69
4308	4308-2Z	4308-2RS	40	90	33	1.5	46	48.8	0.95
4309	4309-2Z	4309-2RS	45	100	36	1.5	57.6	62.4	1.25
4310	4310-2Z	4310-2RS	50	110	40	2	81.9	69.5	1.7