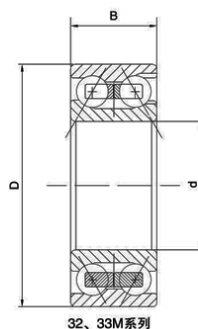
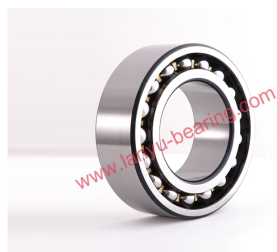


## Brass cage double row angular contact ball bearing



Bearing No.		Dimensions(mm)				Rated load(KN)		Weight
Old No.	New No.	d	D	B	r	Cr	Cor	Mass(KG)
3056212M	3212M	60	110	36.5	1.5	83.5	72.5	1.55
3056213M	3213M	65	120	38.1	1.5	87.5	79.5	1.78
3056214M	3214M	70	125	39.7	1.5	90	80.5	1.9
3056215M	3215M	75	130	41.3	1.5	106	95.5	2.15
3056216M	3216M	80	140	44.4	2	112	106	2.7
3056217M	3217M	85	150	49.2	2	140	129	3.5
3056218M	3218M	90	160	52.4	2	153	142	4.18
3056219M	3219M	95	170	55.6	2.1	163	184	5.1
3056220M	3220M	100	180	60.3	2.1	210	240	6.14
3056221M	3221M	105	190	65.1	2.5	210	240	7.4
3056222M	3222M	110	200	69.8	2.5	218	245	9.2
3056224M	3224M	120	215	76	3	251	291.5	11.1
3056226M	3226M	130	230	80	3.5	259.5	314.9	13.3
3056228M	3228M	140	250	88	3.5	304.5	391.3	15.2
3056308M	3308M	40	90	36.5	1.5	60.5	44	1.01
3056309M	3309M	45	100	39.7	1.5	72.5	54	1.41
3056310M	3310M	50	110	44.4	2	85.5	65	1.96
3056311M	3311M	55	120	49.2	2	106	82	2.68
3056312M	3312M	60	130	54	2.1	122	96	3.25
3056313M	3313M	65	140	58.7	2.1	138	109	4.18
3056314M	3314M	70	150	63.5	2.5	155	125	5.2
3056315M	3315M	75	160	68.3	2.5	168	141	5.85

Brass cage double row angular contact ball bearing

3056316M	3316M	80	170	68.3	3	175	151	7.75
3056317M	3317M	85	180	73	3	196	240	8.3
3056318M	3318M	90	190	73	3	225	266	9.02
3056319M	3319M	95	200	77.8	3.5	269	294	11.16
3056320M	3320M	100	215	82.6	3.5	309	359	14.2
3056321M	3321M	105	225	87.3	3.5	309	360	16.35
3056322M	3322M	110	240	92.1	3.5	329	403	19.8
3056324M	3324M	120	260	106	3.5	397.9	493.3	25.4